

Deluxe Shelf Pin Jig

Basic Instructions

Version 1.0

Safety First



Disconnect saw from power source before fitting or removing insert.



Always wear proper ear protection when working with machinery.



Use caution when handling sharp objects (saw blades, router bits, drill bits and so on). Use protective gloves whenever possible.



Always wear proper eye protection when working with machinery and tools.

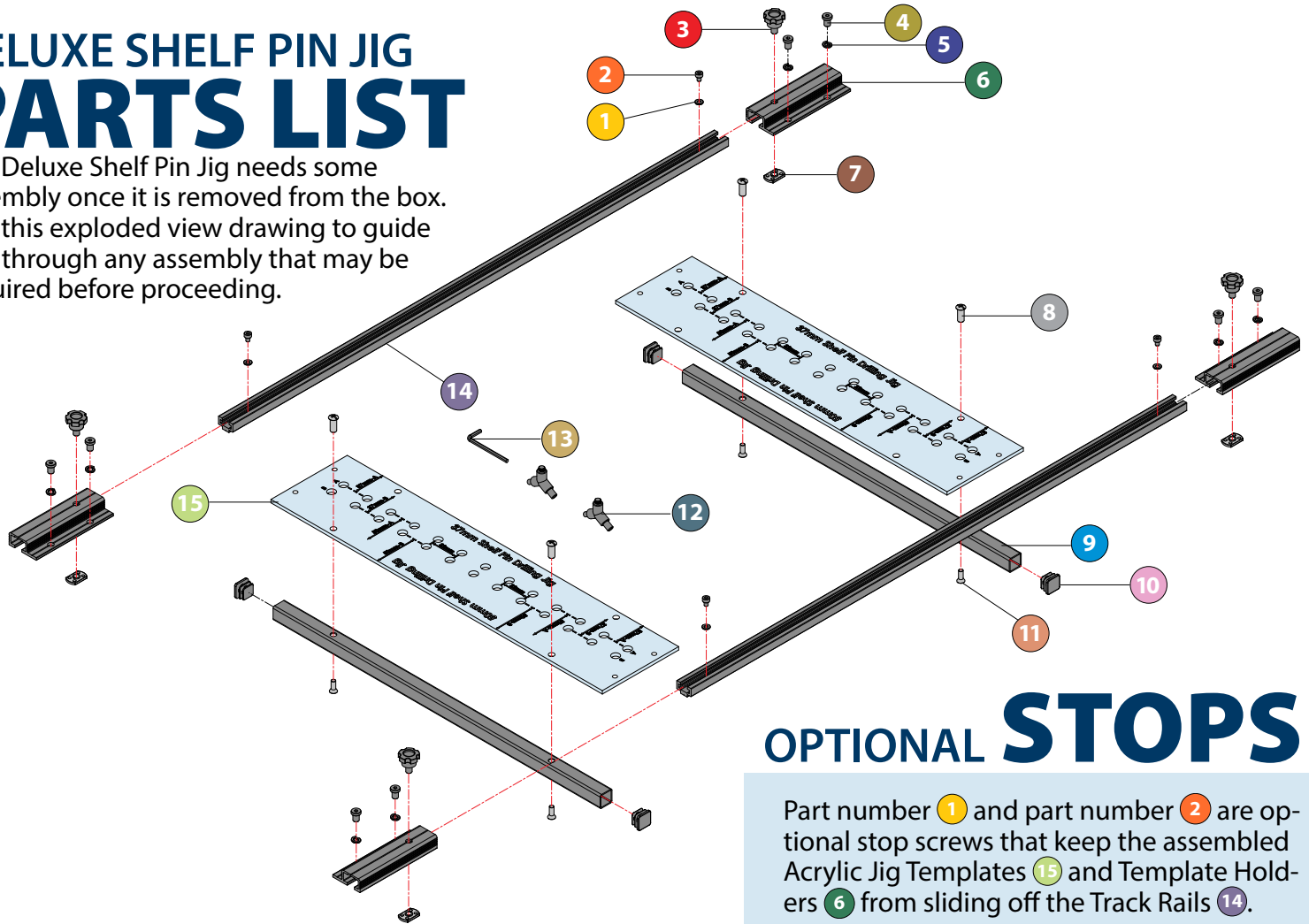


Always wear proper respiratory protection when working near airborne dust particles.

Please read and fully understand any and all safety materials that came with your power tools or machinery before operation. Always follow all safety guidelines set in place by the power tool or machine manufacturer.

DELUXE SHELF PIN JIG PARTS LIST

The Deluxe Shelf Pin Jig needs some assembly once it is removed from the box. Use this exploded view drawing to guide you through any assembly that may be required before proceeding.



OPTIONAL STOPS

Part number 1 and part number 2 are optional stop screws that keep the assembled Acrylic Jig Templates 15 and Template Holders 6 from sliding off the Track Rails 14.

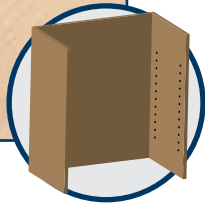
No.	Description	Qty	No.	Description	Qty	No.	Description	Qty
1	#8 Washer	4	6	Template Holder	4	11	10-24x1/2" Flat Head Screw	4
2	M4x3/16" Socket Head Cap Stop Screw	4	7	T-Nut For Round Knob	4	12	Indexing Pin	2
3	1/4"x20x3/8" Studded Round Knob	4	8	Socket Screw	4	13	1/8" Hex Key Wrench	1
4	1/4"x20x3/8" Socket Head Cap Screw	8	9	17 ³ / ₈ " Steel Jig Guide Bar	2	14	26 ³ / ₈ " Track Rail	2
5	1/4" Lock Washer	8	10	End Cap for Steel Jig Guide Bar	4	15	Acrylic Jig Template	2

DETERMINE YOUR SET BACK

Decide what distance you want your "setback" to be. The setback distance is the distance from the edge of your cabinet to the location of the shelf pin hole center. Most of the time 37mm ($1\frac{7}{16}$ ") is used, however if you are building a wider than normal cabinet then you may want to push the setback further into the cabinet. In this case you would use the 50mm ($1\frac{15}{16}$ ") setback.

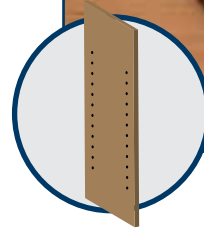
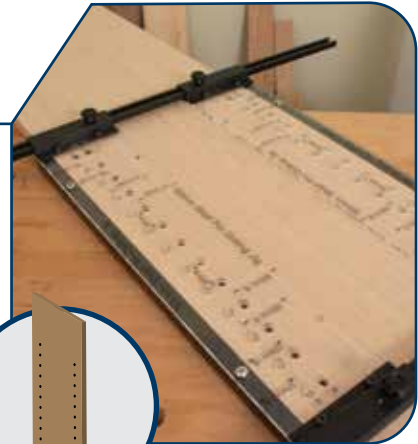
COLUMN A

for use with assembled cabinets



COLUMN B

for use with non-assembled cabinets



37 ($1\frac{7}{16}$ ")
mm
side for
37mm
setbacks

The most common setting for standard shelf pin drilling

50 ($1\frac{15}{16}$ ")
mm
side for
50mm
setbacks

For larger, wider cabinets where more support is needed.



32 ($1\frac{1}{4}$ ")
mm

vertical hole spacing

The most common setting for standard shelf pin drilling



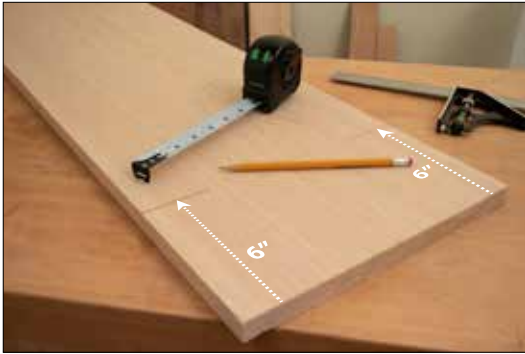
COLUMN B

is the most commonly used method with the Deluxe Shelf Pin Jig System since it can align both sides of an un-assembled board very quickly and easily.

2 DIFFERENT WAYS TO USE THE JIG

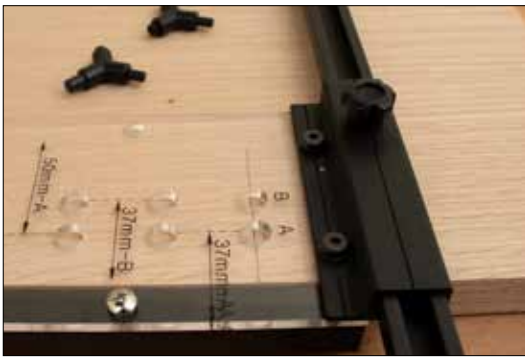
First, when assembling the jig for working on non-assembled cabinets (**Column B**), whichever setback you choose (37mm or 50mm), that marking should be facing the outside of your jig (the outer edge the guide bar is attached to). Second, when working on cabinets that are already assembled (**Column A**), the acrylic jig templates will be removed from the Track Rails and Guide Bar then placed directly into the corner of your cabinet. Make sure the appropriate side is against the cabinet corner. 37mm setbacks will have the 37mm side against the corner while the 50mm setbacks will have the 50mm side against the corner.

1 DETERMINE YOUR FIRST HOLE LOCATION



The jig works with cabinet widths as small as 7" wide and up to 26" wide (with optional stop screws #2 removed). Before drilling, decide where you want your first hole to be at the bottom of your cabinet. Generally 6" from the bottom is a good starting point. Once your starting point is determined, mark your hole location on both sides of your board.

2 ALIGN YOUR SHELF PIN JIG



With the shelf pin jig fully assembled, place the jig onto your stock and close both sides of the jig up against the sides of your stock piece. Lock the jig by securing each of the round knobs securely. Align the jig with the first hole on the bottom of the jig as shown here. Make sure both sides of the jig properly align with the marks made in the previous step.

3 DRILL THE FIRST SHELF PIN HOLE



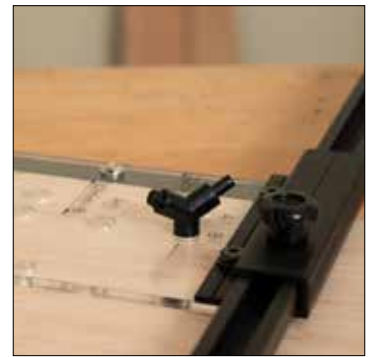
Drill the first hole at the bottom of the jig with the appropriate drill bit (either 1/4" or 5mm drill bit – both are included). Once the hole is drilled. DO NOT drill anymore holes until you continue to the next step

4 INSERT THE INDEXING PIN



Insert the star shaped indexing pin. The indexing pin has two different dowel tips. One is 1/4" in diameter and the other is 5mm in diameter. Use the appropriate pin size for the holes you just drilled. Make sure the pin is full seated into the hole before proceeding.

5 DRILL A HOLE ON THE OTHER SIDE/INSERT PIN



Once the indexing pin is fully in place, drill the first hole on the other side of your board and repeat the previous step with the other included indexing pin. Doing this will keep the jig from moving while you drill the rest of your holes.

6 DRILL THE REMAINING HOLES



DRILL MORE HOLES



To continue accurately drilling holes in longer stock, remove the indexing pins, slide the jig up until the last holes you drilled are aligned with the bottom template holes, then re-insert the two indexing pins to hold the jig in place.

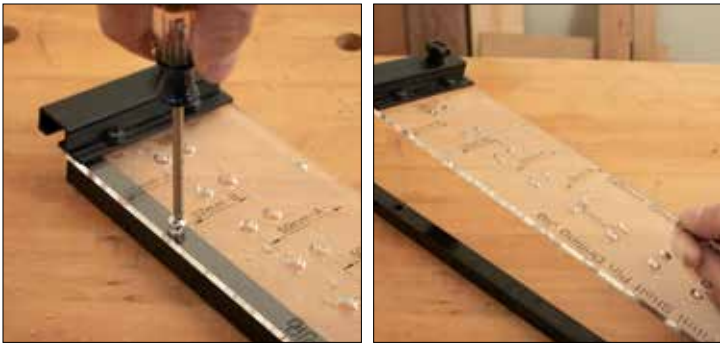
Drill the rest of your holes as needed on both sides of the jig. Repeat this entire process on the other side of the cabinet wall for perfectly aligned holes for your shelf pins.

1 REMOVE THE JIGS FROM THE GUIDE TRACKS



Loosen the studded round knob at the top and bottom of the jig templates. If installed, remove the M4x3/16" Socket Head Stop Screws and Washers (Parts 1 & 2). Slide the jigs off of the long track rails.

2 REMOVE THE STEEL SIDE BAR



Loosen the screw on the jig template guide bars then remove the acrylic jig template.

3 DETERMINE YOUR FIRST HOLE LOCATION



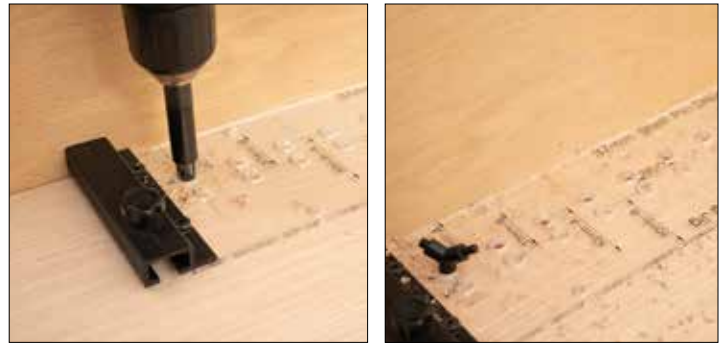
Decide where you want your first hole to be at the bottom of your cabinet. Generally 6" from the bottom is a good starting point for most cabinet shelf projects. Once your starting point is determined, mark your hole location.

4 ALIGN YOUR SHELF PIN JIG



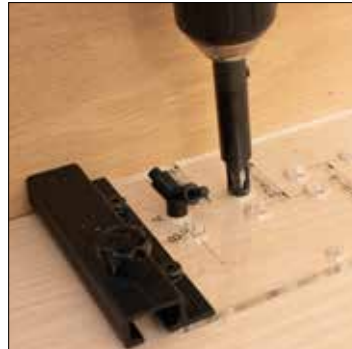
Place the acrylic jig template on top of your mark and line up to the center of the pre-drilled hole. Make sure that you are using the appropriate side of the template for your setback. In this example we are working this project using the 37mm setback, so that edge is up against the corner of the cabinet.

5 DRILL THE FIRST SHELF PIN HOLE



Drill the first hole at the bottom of the jig with the appropriate drill bit (either 1/4" or 5mm drill bit – both are included). Once the hole is drilled. DO NOT drill anymore holes until you continue to the next step

6 INSERT THE INDEXING PIN AND DRILL THE HOLES



To continue accurately drilling holes in longer stock, remove the indexing pin, slide the jig up until the last holes you drilled are aligned with the bottom template holes, then re-insert the indexing pin to hold the jig in place.

Insert the star shaped indexing pin with the 1/4" pin into the hole. This will help hold the template in place. Drill the remaining holes on this side of your cabinet. Repeat this entire column A process on the other side of your cabinet inside board.